



SO Conditional Order Instructions

KB BUDDY WTS & KB BUDDY

Table of Contents

1. Definition.....	3
2. Purpose	3
3. SO Order Cancellation/Modification Rules.....	3
4. Example.....	4
5. Order steps	6
6. Managing Conditional Orders.....	8

1. Definition

Split Order (SO) is an order that divides a large order into multiple smaller orders, which can be split based on various criteria such as **volume, price, time interval**, etc.

In which:

- **Total Volume:** The total number of securities that an investor wants to buy or sell. This represents the large order (**original order**) that needs to be divided into smaller orders (**sub orders**).
- **Split Volume:** The volume of each sub order when the system splits the original order. The split volume must be a multiple of the **round lot** as per the exchange's regulations. Sub order volume = Split volume +/- Volume range (if applicable).
- **Order Price** is the limit price (**LO**) that generates a sub-order. Sub order price = Order price +/- Price range (if applicable). The order price of a sub-order is equal to the floor price if (Order price - Price margin) is less than the floor price, equal to the ceiling price if (Order price + Price margin) is greater than the ceiling price.
- **Trigger Type:**
 - **All at once:** The system splits the original order into sub orders and submits all sub orders at once.
 - **After a time interval:** The system splits the original order into sub orders and submits each order at a predefined time interval set by the investor.
 - **After previous order is fully executed:** The system generates the next sub order only after the previous sub order has been completely executed.
- **Order validity**
 - The order is only valid within the day.
 - The order will only start splitting from the continuous matching session, not during the periodic matching sessions (ATO, ATC), and not during the lunch break (11:30 AM - 1:00 PM).
 - At the time of order splitting, if the sub-account does not meet the requirements for buying or selling, the split order and any remaining sub-orders will be canceled. At the end of the trading day, any sub-orders that are not fully matched will be canceled, and the original SO order will be marked as Expired.

2. Purpose

Allow investors to break down a large order into multiple smaller orders under the same sub-account and configure the execution timing as desired.

3. SO Order Cancellation/Modification Rules

- It is **not allowed** to **modify** the original order or any sub-orders that have been generated. Investors may **cancel** the original order and place a new one if needed.
- The original order can **only be canceled** when it is in the **Pending Activation** or **Activated** status. It **cannot be canceled during the ATC session**. Orders can only be split during continuous matching sessions and cannot be split during periodic call auctions.

[Back to Table of Contents](#)

- When canceling the original order, the system will also cancel any generated sub-orders **if they have not been matched** or have been **partially matched** and cancel any **pending activation orders** for the "After a specific time" trigger type.
- It is **not allowed to cancel sub-orders** of a conditional SO order.

4. Example

▪ Example 1: Split Order (SO) with "All at Once" Trigger Type

An investor wants to buy a total of 100,000 AAA shares at an average price of around 21,700. The investor prefers to split the order into multiple sub orders, each with a volume of 20,000 shares, allowing for a volume range of 1,000 shares. The order price is 21,700, with a price range of 0.2. All sub-orders will be generated at once. The investor places a Conditional SO order with the following details:

- **Stock Symbol:** AAA
- **Order Type:** SO – Buy
- **Total Volume:** 100,000
- **Split Volume:** 20,000
- **Volume Range:** 1,000
- **Order Price:** 21.7
- **Price Range:** 0.2
- **Trigger Type:** All at Once

Order Execution Process:

At the time of order activation, the system will continuously generate sub orders with randomized volumes and prices (Sub Order Volume = Split Volume +/- Volume Range and Order Price = Placed Price +/- Price Range) until the remaining volume reaches zero.

- Order 1: Sub order volume = 20,000 + 1,000 = 21,000, Order price = 21.7 + 0.2 = 21.9
- Order 2: Sub order volume = 20,000 – 1,000 = 19,000, Order price = 21.7 + 0.2 = 21.9
- Order 3: Sub order volume = 20,000 + 1,000 = 21,000, Order price = 21.7 – 0.2 = 21.5
- Order 4: Sub order volume = 20,000– 1,000 = 19,000, Order price = 21.7 + 0.2 = 21.9
- Order 5: Sub order volume = 20,000– 1,000 = 19,000, Order price = 21.7 – 0.2 = 21.5
- Order 6: Sub order volume = 1,000, Order price = 21.7 + 0.2 = 21.9

Once the sub orders are placed in the system, the original order status updates to Activated. The original order is marked as "Completed" if all sub orders are fully executed. If any sub order remains unexecuted by the end of the trading day, the original order status changes to "Expired."

▪ Example 2: Split Order (SO) with "After Previous Order Fully Executed" Trigger Type

Investor wants to sell 100,000 AAA shares at a price around 21,700. However, instead of executing all sub orders at once, the investor prefers to place each sub order sequentially, ensuring that the next order is generated only after the previous one is fully executed.

The investor places a Conditional SO order with the following details:

- **Stock Symbol:** AAA
- **Order type:** SO – Sell

[Back to Table of Contents](#)

- **Volume:** 100,000
- **Split Volume:** 20,000
- **Volume Range (+/-):** 1,00
- **Order Price:** 21.7
- **Price Range (+/-):** 0.2
- **Trigger Type:** After Previous Order Fully Executed

Order Execution Process

At the time of activation, the system will generate a sub order with a randomized volume and price (Sub Order Volume = Split Volume +/- Volume Range and Order Price = Placed Price +/- Price Range) and send it to the exchange. Once this sub order is fully executed, the system will generate the next order and continue the process until the remaining volume reaches zero.

- The first sub order is randomly generated with a volume = $20,000 - 1,000 = 19,000$ and an order price = $21.7 + 0.2 = 21.9$ (referred to as Order 1).
- Once Order 1 is fully executed, the system generates Order 2 with a volume of = $20,000 + 1,000 = 21,000$ and an order price = $21.7 + 0.2 = 21.9$.
- After Order 2 is fully executed, the system generates Order 3 with a volume = $20,000 + 1,000 = 21,000$ and a placed price = $21.7 - 0.2 = 21.5$.
- After Order 3 is fully executed, the system generates Order 4 with a volume = $20,000 - 1,000 = 19,000$ and an order price = $21.7 - 0.2 = 21.5$.
- Once Order 4 is fully executed, Order 5 is generated with a volume of 20,000 shares and a placed price = $21.7 + 0.2 = 21.9$.

When Order 1 is sent to the system, the original order's status changes to Activated. The original order will be marked Completed once all five sub orders are fully executed or Expired at the end of the trading day if any sub order remains unfilled.

▪ Example 3: SO Order with Time-Interval Activation

An investor wants to buy 100,000 AAA shares at an average price of around 21,700. The investor wishes to split the order into multiple sub-orders, each with a volume of 20,000 shares, a volume range of 1,000, a placed price of 21,700, and a price range of 200. The sub-orders will be generated at 15-minute intervals. The investor places an SO conditional order with the following details:

- **Ticker:** AAA
- **Order Type:** SO – Buy
- **Total Volume:** 100,000
- **Split Volume:** 20,000
- **Volume Range (+/-):** 1,000
- **Placed Price:** 21.7
- **Price Range (+/-):** 0.2
- **Activation Type:** After a Time Interval
- **Interval:** 15 minutes

[Back to Table of Contents](#)

Order Execution Process:

At the activation time, the system will generate a sub-order with a random volume and price (Sub-Order Volume = Split Volume +/- Volume Range and Order Price = Placed Price +/- Price Range), after 15 minutes, the system will generate the next sub-order and continue the process until the remaining volume reaches zero.

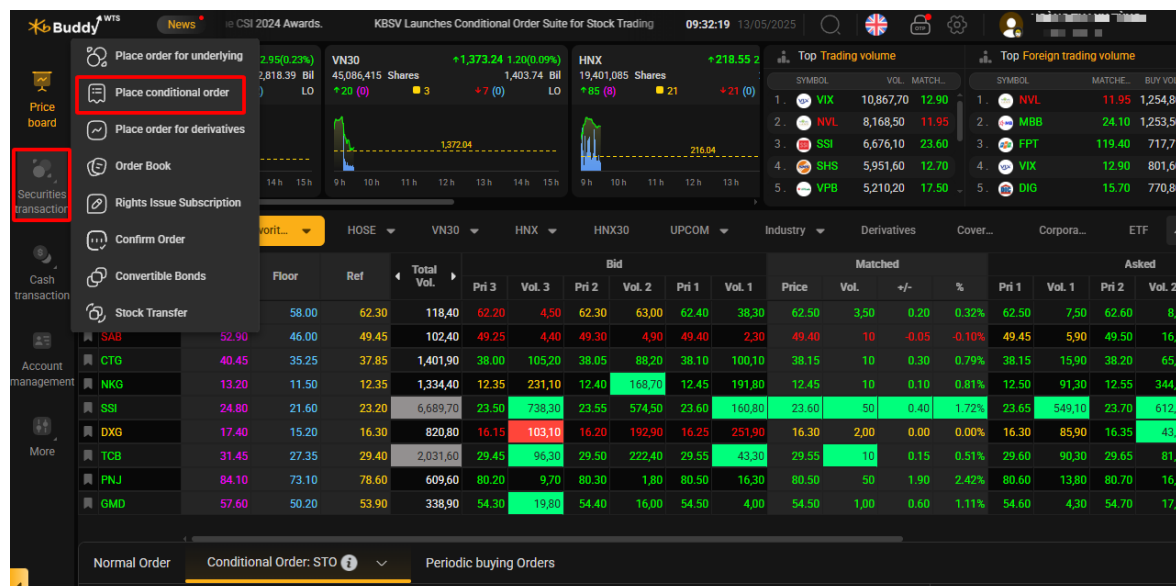
- The first sub-order (Order 1) is randomly generated with a volume = $20,000 - 1,000 = 19,000$ and a order price = $21.7 + 0.2 = 21.9$
- After time interval = 15 minutes, the system generates Order 2 with a volume = $20,000 + 1,000 = 21,000$ and a order price = $21.7 - 0.2 = 21.5$.
- After the next time interval = 15 minutes, the system generates Order 3 with a volume = $20,000 + 1,000 = 21,000$ and a order price = $21.7 + 0.2 = 21.9$
- After the next time interval = 15 minutes, Order 4 is generated with a volume = $20,000 - 1,000 = 19,000$ and a order price = $21.7 + 0.2 = 21.9$.
- After the next time interval = 15 minutes, Order 5 is generated with a volume = 20,000 shares and a order price = $21.7 + 0.2 = 21.9$.

When Order 1 is sent to the system, the original order status changes to Activated. The original order will be marked Completed once all five sub-orders are fully executed or Expired at the end of the trading day if any sub-order remains unfilled.

5. Order steps

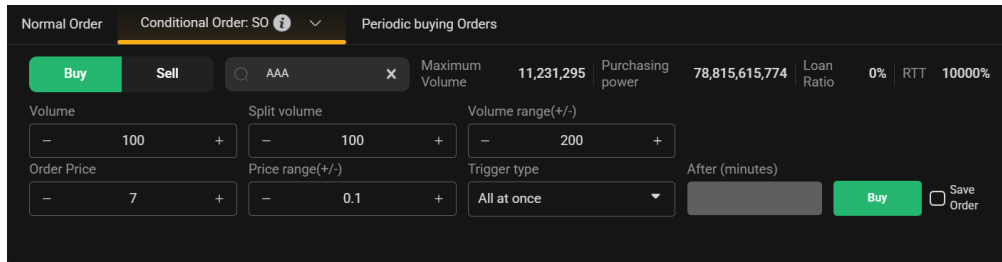
❖ KB Buddy WTS

- Step 1: Investors log into: <https://kbbuddywts.kbsec.com.vn/>
- Step 2: Select **Securities Transaction/Place Conditional Order** or click the **"Speed Order-F2"** button in the top left corner of the screen.



[Back to Table of Contents](#)

- Step 3: Select the **Conditional Order** tab and choose **SO**

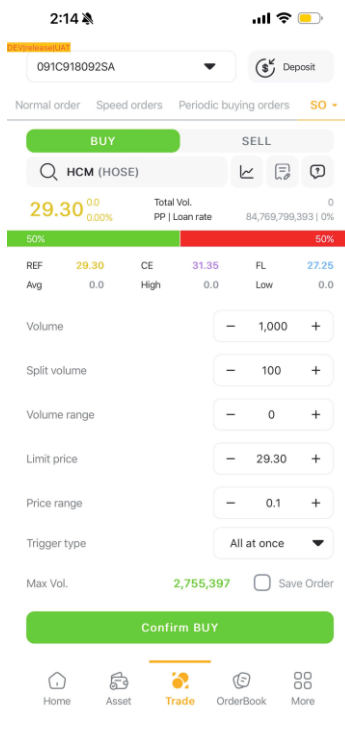


The screenshot shows the 'Conditional Order: SO' interface. At the top, there are tabs for 'Normal Order', 'Conditional Order: SO' (selected), and 'Periodic buying Orders'. Below the tabs, there are input fields for 'Buy' and 'Sell' (selected), a search bar with 'AAA', and a 'Maximum Volume' of 11,231,295. To the right, 'Purchasing power' is 78,815,615,774, 'Loan Ratio' is 0%, and 'RTT' is 10000%. The main section contains input fields for 'Volume' (100), 'Split volume' (100), 'Volume range(+/-)' (200), 'Order Price' (7), 'Price range(+/-)' (0.1), 'Trigger type' (All at once), and 'After (minutes)'. There are 'Buy' and 'Save Order' buttons at the bottom right.

- Step 4: Enter the order information
 - o Click **Buy/Sell**
 - o Enter **Stock Symbol**
 - o Enter **Volume**
 - o Enter **Split Volume**
 - o Enter **Volume range (+/-)**
 - o Enter **Limit Price**
 - o Enter **Price range (+/-)**
 - o Select **Trigger Type**
 - o Enter **Time Interval (minutes) (For trigger type: After a period)**
 - o Click **Buy/Sell**
- Step 5: On the Order Confirmation screen, enter the OTP authentication code to complete the order.

❖ KB Buddy

- Step 1: Investors log in to securities account on the **KB Buddy** app.
- Step 2: Select **Trade**
- Step 3: Select **Conditional Order**, select **SO**



The screenshot shows the 'Conditional Order: SO' screen in the KB Buddy app. At the top, there's a status bar with the time 2:14 and signal/battery icons. Below that, there's a dropdown menu with '091C918092SA' and a 'Deposit' button. The main section has tabs for 'Normal order', 'Speed orders', 'Periodic buying orders', and 'SO' (selected). Below the tabs, there are 'BUY' and 'SELL' buttons. A search bar contains 'HCM (HOSE)'. Below the search bar, there's a price display showing '29.30' with a green up arrow and '0.00' with a green up arrow. To the right, 'Total Vol.' is 0 and 'PP | Loan rate' is 84,769,799,393 | 0%. Below this, there's a table with columns: REF, Avg, CE, High, FL, Low. The values are: REF 29.30, Avg 0.0, CE 31.35, High 0.0, FL 27.25, Low 0.0. Below the table, there are input fields for 'Volume' (1,000), 'Split volume' (100), 'Volume range' (0), 'Limit price' (29.30), 'Price range' (0.1), and 'Trigger type' (All at once). At the bottom, there's a 'Max Vol.' of 2,755,397 and a 'Save Order' button. A large green 'Confirm BUY' button is at the bottom. The bottom navigation bar has icons for Home, Asset, Trade (selected), OrderBook, and More.

[Back to Table of Contents](#)

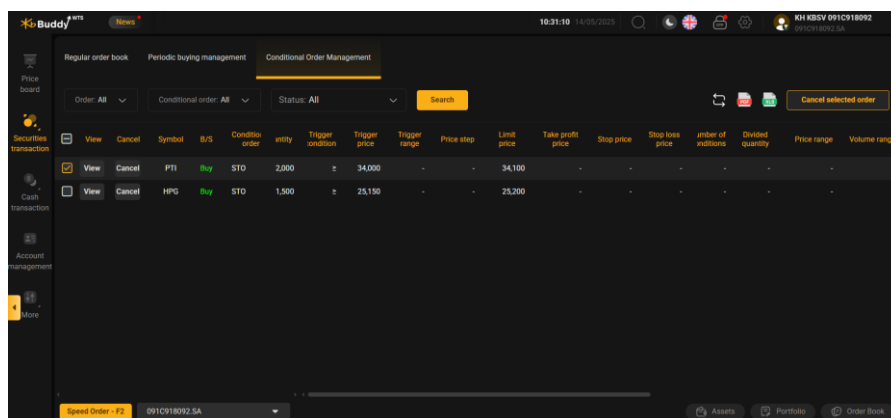
- Click **Buy/Sell**
- Enter **Stock Symbol**
- Enter **Volume**
- Enter **Split volume**
- Enter **Volume range (+/-)**
- Enter **Limit Price**
- Enter **Price range (+/-)**
- Select **Trigger type**
- Enter **Time Interval** (minutes) (For trigger type: After a period)
- Click **Buy/Sell**
- Step 4: On the Order Confirmation screen, enter the OTP authentication code to complete the order.

6. Managing Conditional Orders

❖ KB Buddy WTS

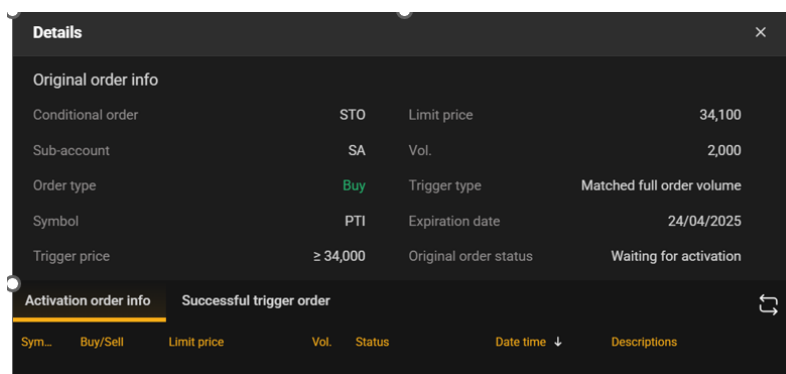
Investors can view and track placed conditional orders during the day in **Securities Transaction/Order Book/Conditional Order Management**.

- Orders can be filtered by criteria: Order Type (Buy/Sell), Conditional Order Type, and Status.



View	Cancel	Symbol	B/S	Condition	Order	Quantity	Trigger condition	Trigger price	Trigger range	Price step	Limit price	Take profit price	Stop price	Stop loss price	Order of actions	Divided quantity	Price range	Volume range
		PTI	Buy	STO		2,000	≥	34,000			34,100							
		HPG	Buy	STO		1,500	≥	23,150			23,200							

- Select **"Cancel"** if the investor wants to cancel the original order (for orders that allow cancellation).
- Select **"View"** to see detailed information about the original order and triggered orders. On this screen, investors can also cancel triggered sub-orders.



Original order info			
Conditional order	STO	Limit price	34,100
Sub-account	SA	Vol.	2,000
Order type	Buy	Trigger type	Matched full order volume
Symbol	PTI	Expiration date	24/04/2025
Trigger price	≥ 34,000	Original order status	Waiting for activation

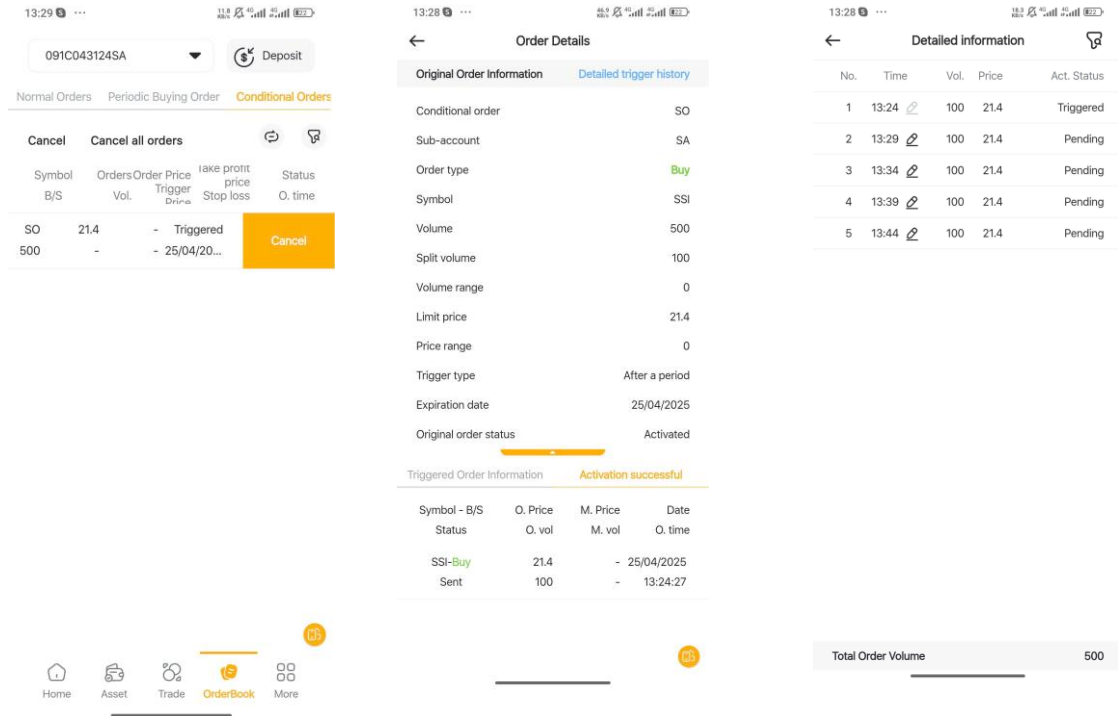
Activation order info			
Sym...	Buy/Sell	Limit price	Vol.
Status	Date time	↓	Descriptions

[Back to Table of Contents](#)

❖ KB Buddy

Investors can view and track conditional orders during the day in **Order Book/Conditional Orders**.

- Orders can be filtered by criteria: **Order Type (Buy/Sell)**, **Conditional Order Type**, and **Status**.
- Swipe left and select "**Cancel**" if the investor wants to cancel the original order (for orders that allow cancellation).
- Click on each order line to view detailed information about the original order and triggered orders.



Conditional Orders

Symbol B/S	Orders Vol.	Order Price	Take profit price Trigger	Stop loss	Status O. time
SO	21.4	-	Triggered	-	-
500	-	-	- 25/04/20...	-	-

Order Details

Original Order Information

Conditional order	SO
Sub-account	SA
Order type	Buy
Symbol	SSI
Volume	500
Split volume	100
Volume range	0
Limit price	21.4
Price range	0
Trigger type	After a period
Expiration date	25/04/2025
Original order status	Activated

Detailed trigger history

No.	Time	Vol.	Price	Act. Status
1	13:24	100	21.4	Triggered
2	13:29	100	21.4	Pending
3	13:34	100	21.4	Pending
4	13:39	100	21.4	Pending
5	13:44	100	21.4	Pending

Triggered Order Information

Activation successful

Symbol - B/S	O. Price	M. Price	Date
Status	O. vol	M. vol	O. time
SSI-Buy	21.4	-	25/04/2025
Sent	100	-	13:24:27

Total Order Volume 500

[Back to Table of Contents](#)