

VIETNAM DAILY

[Market Commentary]

Vietnam's stock market rallied alongside the world stock market's rebounds after the US bond yields fell despite the lately announced May CPI increase of 5%

[Futures/ETFs]

Futures gained thanks to the positive movements of the global stock market

[Market Movers]

VHC, VNM

June 11, 2021

	Index	Chg (%, bp)
Ho Chi Minh	1,351.74	+2.13
VN30	1,487.61	+2.51
VN30 futures	1,493.20	+2.77
Hanoi	316.69	+1.72
HNX30	494.16	+2.67
UPCoM	88.93	+2.02
USD/VND	22,973	+0.05
10-yr govt bond (%)	2.18	-4
Overnight rate (%)	1.06	+22
Oil (WTI, \$)	70.47	+0.26
Gold (LME, \$)	1,895.62	-0.15



Market Commentary

VNIndex 1,351.74P (+2.13%)
Volume (mn shrs) 665.6 (+0.0%)
Value (U\$m) 1,034.5 (-6.2%)

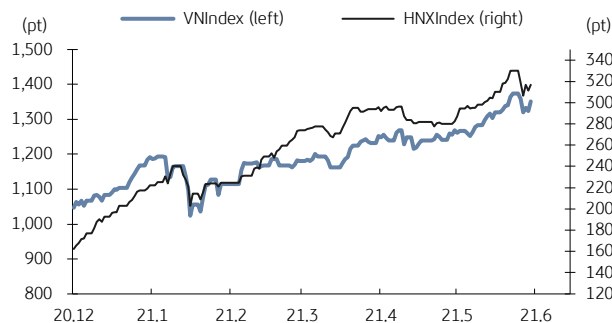
HNXIndex 316.69P (+1.72%)
Volume (mn shrs) 149.2 (+0.0%)
Value (U\$m) 153.0 (+1.8%)

UPCoM 88.93P (+2.02%)
Volume (mn shrs) 85.2 (+0.0%)
Value (U\$m) 67.8 (+5.5%)

Net foreign buy (U\$m) +27.9

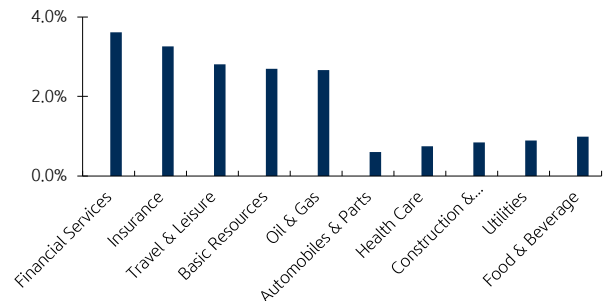
Vietnam's stock market rallied alongside the world stock market's rebounds after the US bond yields fell despite the lately announced May CPI increase of 5%. Fitch Ratings forecasts that the uptrend in iron ore prices will continue in 2021 as the market supply is weak, and new projects will need time to make up for the decline in production. This helped Hoa Phat Group (HPG, +2.9%) and Hoa Sen Group (HSG, +1.3%) to gain today. Vietinbank (CTG, +6.9%) and Orient Commercial Bank (OCB, +5.7%) since the State Bank officially approved their capital raise plans. Vietnam Customs reported May export turnover of textiles and textile fibers and yarns of all kinds reached USD 2.6 billion (36.4% YoY) and USD 473.1 million (+122.6% YoY) respectively, which propelled strong increases in TNG Investment & Trading (TNG, +7.6%) and Century Fiber (STK, +2.5%). Foreign investors neobought, focusing on Petrolimex (PLX, +2.9%), Vinhomes (VHM, +1.8%) and Khang Dien House (KDH, +4.0%).

VN Index & HNX Index



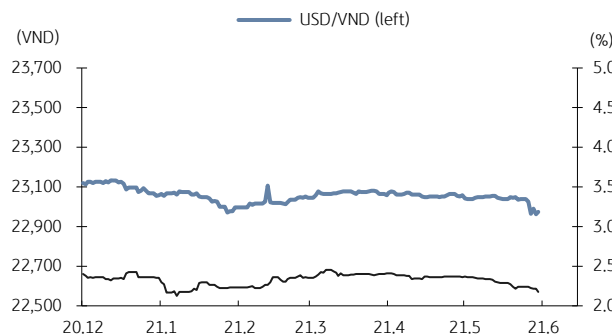
Source: Bloomberg, KB Securities Vietnam

VN Index sector performance



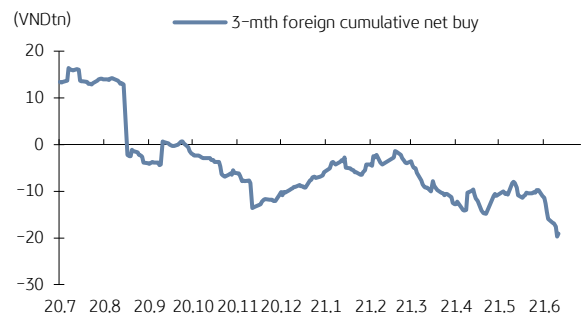
Source: Bloomberg, KB Securities Vietnam

USD/VND & 10-year government bond rates



Source: Bloomberg, KB Securities Vietnam

Vietnam - 3-mth cumulative net foreign buy



Source: FiinPro, KB Securities Vietnam

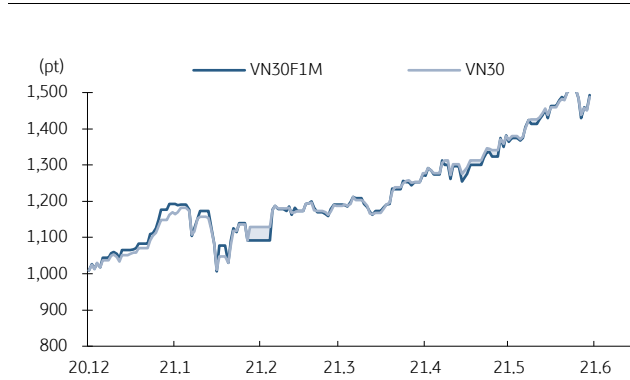
Futures/ETFs

VN30 1,487.61P (+2.51%)
VN30 futures 1,493.2P (+2.77%)
Open 1,458.9P
High 1,494.9P
Low 1,456.2P

Futures gained thanks to the positive movements of the global stock market. The basis opened at 8.81bps and fluctuated in a range from -1.8 to 7.0bps before closing at 5.59bps. Foreigners were netbought and market liquidity decreased slightly.

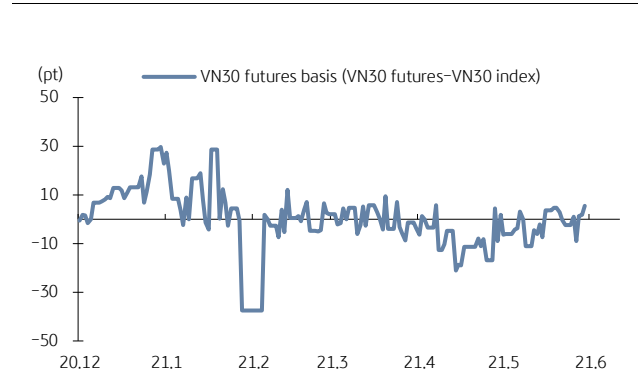
Contracts 136,997 (-60.3%)

VN30 futures & VN30 index



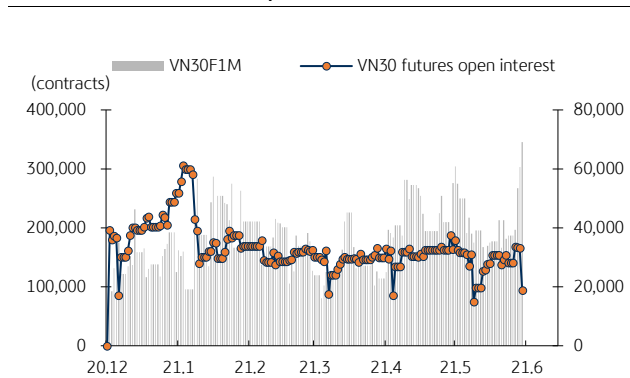
Source: Bloomberg, KB Securities Vietnam

Front month VN30 futures basis



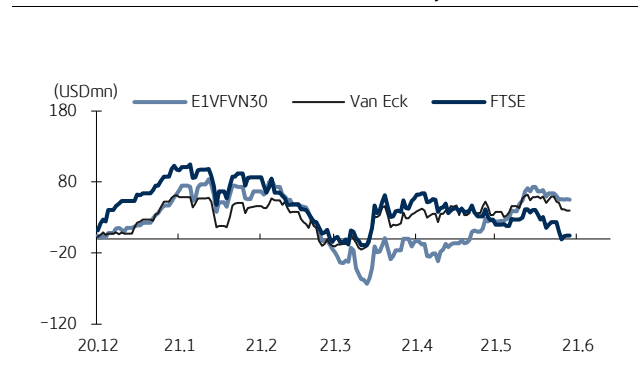
Source: Bloomberg, KB Securities Vietnam

VN30 futures volume & open interest



Source: Bloomberg, KB Securities Vietnam

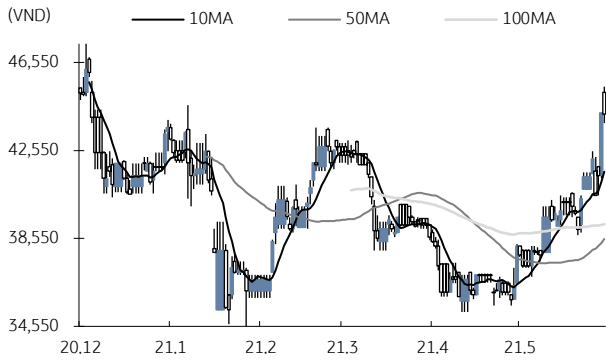
Vietnam ETFs - 3-mth cumulative net buy



Source: FiinPro, KB Securities Vietnam

Market Movers

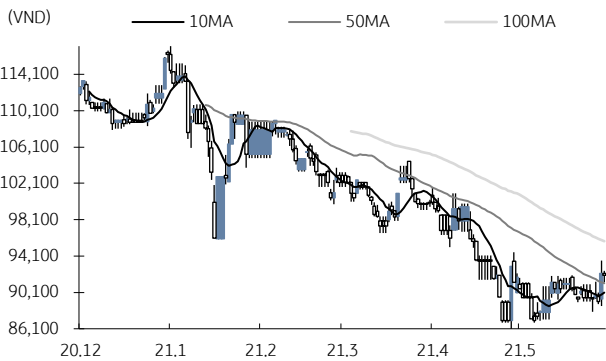
Vinh Hoan Corp (VHC)



Source: Bloomberg, KB Securities Vietnam

- VHC closed down 0.1% to VND44,200
- VHC's May export sales were VND743 billion (+35% YoY, -7% MoM), of which pangasius sales grew strongly to VND515 billion (+46% YoY).
- Export value to major export market US bounced back 188% to VND314 billion, China increased 9% to VND120 billion, but the EU market decreased 22% to VND112 billion.

Vinamilk (VNM)



Source: Bloomberg, KB Securities Vietnam

- VNM closed down 0.2% to VND92,000
- VNM's dairy farm complex in Laos should operate from 1Q22 and distribute milk to Nghe An dairy factory.
- The USD150 million-financed first phase of the project covers 5,000 hectares, and feeds a total herd of 24,000 cows.

KBSV Model Portfolio

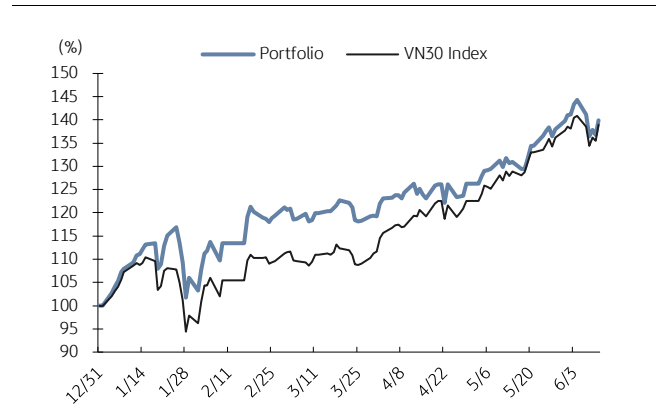
KBSV Research Team

Investment approach:

- Seeks to outperform the VN30 Index by identifying the most attractive stocks within our coverage universe over the next 3 months
- Employs a risk-managed exit strategy that sets a profit target of +30% and stop loss of -15%
- Uses an equal-active-weight (with monthly rebalancing method) approach that allocates 100% of the portfolio to stocks that, at times, can include a VN30 index ETF

	VN30 Index	Master Portfolio
Daily return	2.51%	2.31%
Cum. return	38.93%	39.90%

Performance vs VN30 Index



KBSV domestic model portfolio

Ticker	Inclusion date	Close 21/06/11	Daily return (%)	Cumulative return (%)	Main investment catalysts
Mobile World (MWG)	19/08/09	137,000	1.3%	18.2%	<ul style="list-style-type: none"> - Optimizing revenue from DMG & TGDD chains - BHX expects to reach break-even point soon at stores and distribution centers - In the long term, BHX aims to capture 10-15% of the food retail market
Nam Long Invest (NLG)	19/06/03	39,050	1.4%	59.7%	<ul style="list-style-type: none"> - Leader in mid- to high-end housing & Japanese partners for large urban area (UA) projects - Largest urban area developer (Mizuki Park UA, Akari City UA & Waterpoint US)
Phu Nhuan Jewelry (PNJ)	19/03/22	96,900	1.1%	26.4%	<ul style="list-style-type: none"> - Strong topline supported by transaction volumes (2018 +34%) & ASPs (2018 +5%) - Strongest customer base to capture lucrative watch segment (5% of sales by 2022E) - Core business activities growing again after the "ERP" incident
Military Bank (MBB)	18/12/18	39,400	4.0%	131.9%	<ul style="list-style-type: none"> - Military Insurance Corporation (MIC) non-life premiums to boost 2019 non-bank income - Retail loan mix (M credit) supports 4% NIM against pricing competition (ACB/MBB) - M credit work-in-progress but low-cost funding from Shinsei triples key cash loan mkt
Refrig Elec Eng (REE)	18/10/11	54,900	0.7%	61.5%	<ul style="list-style-type: none"> - Office lease management & E-town Central occupancy generates stable cash flow - Strategic investments in utility industry provides stable/long-term dividend stream
FPT Corp (FPT)	18/09/06	83,500	2.0%	186.8%	<ul style="list-style-type: none"> - Software outsourcing foothold in Japan/US/Asia-Pacific/EU drives 25% overseas CAGR - Telecoms stable 15% growth/solid subscriber growth & profitable Pay-TV from 2020E - 20%+ earnings momentum by 2020E
Vietin Bank (CTG)	01/31/2020	52,900	6.9%	116.8%	<ul style="list-style-type: none"> - Building on strong earnings recovery in 2019 & optimistic outlook for 2020 - Growing expectations for capital increase in 2020 to offset loan-growth concerns - Already improved asset quality and benign credit risks for 2020
PV Gas (GAS)	20/12/11	87,000	1.0%	18.5%	<ul style="list-style-type: none"> - Gain benefit from growing LNG demand - Expectation on global oil price recovery - Attractive valuation
Hoa Pha Group (HPG)	19/12/04	53,100	2.9%	266.8%	<ul style="list-style-type: none"> - Steel consumption starts to rebound - Construction steel prices show signs of rising again - Increased capacity from Dung Quat project helps HPG expand market share
Kinhbac City Development (KBC)	20/03/09	34,400	1.8%	151.1%	<ul style="list-style-type: none"> - Strong pricing for upcoming land sales after Trang Due urban land sales in 4Q19 - Beneficiary of more production facilities from EU companies after EU-Vietnam FTA - Re-location of supply chains from China after COVID-19 scare

Source: Bloomberg, KB Securities Vietnam

Market Monitors

Ho Chi Minh – Net foreign buys/sells

Ticker	Chg (%)	For. own (%,-1d)	Net buy (VND bn)
PLX	2.9%	16.8%	139.6
VHM	1.8%	22.6%	96.4
KDH	4.0%	31.1%	72.0
STB	5.5%	11.4%	67.7
PDR	5.1%	2.8%	47.8
Ticker	Chg (%)	For. own (%,-1d)	Net sell (VND bn)
DXG	7.0%	32.3%	-133.8
HPG	2.9%	26.5%	-75.8
GEX	3.2%	12.4%	-44.1
LPB	0.2%	3.6%	-30.2
VIC	1.3%	14.1%	-15.3

Source: FinPro, KB Securities Vietnam

Hanoi – Net foreign buys/sells

Ticker	Chg (%)	For. own (%,-1d)	Net buy (VND bn)
VND	5.6%	20.8%	8.8
VCS	6.5%	3.9%	5.6
PVI	6.9%	54.6%	4.5
SHB	1.0%	4.4%	1.1
SHS	4.4%	9.1%	0.8
Ticker	Chg (%)	For. own (%,-1d)	Net sell (VND bn)
THD	1.0%	0.7%	-4.8
PVS	4.8%	7.9%	-2.1
CDN	8.1%	21.5%	-1.9
BVS	3.3%	9.4%	-1.8
PVC	3.5%	5.6%	-1.0

Source: FinPro, KB Securities Vietnam

Sectors – Top 5 best/worst weekly performance

Top 5 best performers	Chg (%)	Key stocks
Travel & Leisure	6.9%	VJC, HVN
Media	4.5%	YEG, YEG
Food & Beverage	2.6%	VNM, SAB
Insurance	0.8%	MIG, BVH
Health Care	0.7%	DCL, TRA
Top 5 worst performers	Chg (%)	Key stocks
Oil & Gas	-5.8%	PLX, PVD
Utilities	-4.2%	GAS, POW
Banks	-3.1%	BID, VCB
Basic Resources	-2.8%	HPG, HSG
Construction & Materials	-1.9%	VGC, VCG

Source: Bloomberg, KB Securities Vietnam

Sectors – Top 5 best/worst monthly performance

Top 5 best performers	Chg (%)	Key stocks
Financial Services	22.4%	SSI, VCI
Basic Resources	15.4%	HPG, HSG
Technology	13.1%	FPT, SGT
Banks	11.8%	CTG, VCB
Chemicals	9.2%	GVR, DGC
Top 5 worst performers	Chg (%)	Key stocks
Media	-3.9%	ADG, YEG
Retail	-2.6%	MWG, ABS
Construction & Materials	-1.6%	VGC, ROS
Automobiles & Parts	-0.1%	TCH, HHS
Oil & Gas	0.0%	PLX, PVD

Source: Bloomberg, KB Securities Vietnam

Vietnam – Focus stocks

Sector	Code	Company name	Price	Mkt cap (VNDbn, USDmn)	Trading value (VNDmn, USDmn)	For avail (% -1d)	P/E(X)		EPS CAGR (%)	ROE(%)		P/B(X)		Performance(%)			
							20E	21E		20E	21E	20E	21E	1D	1W	1M	YTD
Real estate	VIC	VINGROUP JSC	110,000	372,067 (16,170)	273,316 (11.9)	22.5	58.0	43.3	14.7	7.8	9.5	4.3	3.8	1.3	-2.5	-9.9	9.1
	VHM	VINHOMES JSC	103,200	339,478 (14,753)	424,200 (18.4)	26.6	11.4	10.5	35.9	31.2	26.8	3.0	2.4	1.8	1.4	8.2	18.4
	VRE	VINCOM RETAIL JS	34,850	79,190 (3,442)	208,823 (9.1)	17.8	24.7	19.9	-7.6	9.3	10.8	2.3	2.0	2.3	-2.2	1.6	0.3
	NVL	NOVA LAND INVES	60,068	86,712 (3,768)	257,729 (11.2)	31.3	35.3	30.3	6.7	16.5	12.6	4.2	4.4	1.3	1.8	10.8	118.1
	KDH	KHANGDIEN HOUSE	31,182	19,167 (833)	155,419 (6.7)	11.6	19.1	15.1	18.0	14.2	15.6	2.5	2.1	4.1	3.4	10.0	38.2
	DXG	DATXANH GROUP	24,300	12,594 (547)	362,155 (15.7)	13.9	9.9	8.9	-	19.1	18.2	1.7	1.4	7.0	-12.3	4.8	58.3
Banks	VCB	BANK FOR FOREIGN	102,000	378,305 (16,441)	233,665 (10.1)	6.3	16.7	13.9	11.7	21.9	21.5	3.2	2.7	1.0	-2.0	5.0	5.0
	BID	BANK FOR INVESTM	43,400	174,556 (7,586)	247,027 (10.7)	12.7	19.8	14.1	-5.3	12.8	15.6	2.2	1.9	3.0	-7.8	7.4	-5.6
	TCB	VIETNAM TECHNOLO	38,900	136,341 (5,925)	925,654 (40.2)	0.0	11.4	9.7	14.3	19.8	19.2	2.0	1.7	5.0	-3.7	11.9	67.0
	CTG	VIETNAM JS COMM	36,800	137,021 (5,955)	855,977 (37.2)	1.4	12.1	10.0	61.1	19.8	20.0	2.0	1.7	6.9	-2.0	19.7	53.1
	VPB	VIETNAM PROSPERI	41,300	101,381 (4,406)	2,830,753 (122.9)	0.0	12.7	11.2	18.8	21.6	18.5	2.4	2.0	-0.1	0.0	13.8	120.6
	MBB	MILITARYCOMMERC	26,200	73,327 (3,187)	918,160 (39.9)	0.0	10.0	8.6	14.6	21.2	20.5	1.9	1.6	4.0	-5.2	20.5	72.9
	HDB	HDBANK	25,500	40,641 (1,766)	226,774 (9.8)	4.2	9.7	8.1	23.3	21.8	21.2	1.9	1.6	5.4	-2.8	14.8	45.1
	STB	SACOMBANK	18,600	33,548 (1,458)	1,247,238 (54.1)	14.0	26.2	17.9	26.5	8.8	11.0	1.8	1.6	5.5	-5.1	23.7	80.5
	TPB	TIEN PHONG COMME	27,850	28,732 (1,249)	211,667 (9.2)	0.0	8.5	7.2	37.5	23.0	21.4	1.8	1.4	3.8	-6.2	18.1	36.6
	EIB	VIETNAM EXPORT-I	18,500	22,745 (988)	34,383 (1.5)	0.2	44.0	23.9	27.3	5.8	10.0	2.1	2.0	0.3	-9.0	18.3	57.9
Insurance	BVH	BAOVIET HOLDING	61,900	45,950 (1,997)	54,273 (2.4)	21.0	24.8	22.0	15.2	8.4	9.0	2.0	1.9	3.2	0.4	2.3	-13.2
	BMI	BAOMINH INSURANC	26,700	2,439 (106)	32,994 (1.4)	14.2	15.3	12.0	9.1	9.7	11.7	1.3	1.2	1.4	-2.6	14.3	6.0
Securities	SSI	SSI SECURITIES C	33,300	19,947 (867)	698,334 (30.3)	55.4	20.5	16.0	-3.2	14.3	16.2	-	-	6.6	2.8	46.5	51.4
	VCI	VIETCAPITAL SEC	55,000	9,108 (396)	197,710 (8.6)	71.9	-	-	-4.0	-	-	-	-	1.5	8.0	34.6	57.7
	HCM	HOCHI MINH CITY	29,200	8,907 (387)	237,695 (10.3)	52.4	18.8	-	-19.0	17.1	-	2.6	-	3.3	-5.7	20.9	25.5
	VND	VNDIRECT SECURIT	17,211	5,734 (249)	284,076 (12.3)	27.2	-	-	36.3	-	-	-	-	5.6	5.3	57.0	112.0
Consumer staples	VNM	VIETNAM DAIRYP	109,000	227,805 (9,900)	328,152 (14.2)	42.1	18.9	17.7	4.0	34.1	34.7	5.7	5.4	-0.2	2.8	0.9	-15.4
	SAB	SAIGON BEER ALCO	192,500	123,447 (5,365)	34,545 (1.5)	36.9	21.4	18.6	7.3	23.2	23.6	4.5	4.1	2.6	6.8	7.8	-15.8
	MSN	MASANGROUP CORP	95,100	111,712 (4,855)	215,647 (9.4)	16.5	46.3	26.3	-51.9	12.9	17.9	6.1	4.9	2.8	-1.2	4.4	19.2
	HNG	HOANGANH GIA LA	12,450	13,801 (600)	100,986 (4.4)	48.8	-	-	-	-	-	-	-	-0.5	-6.3	-3.7	-28.9
Industrials (transport)	VJC	VIETJET AVIATION	131,800	69,042 (3,001)	58,937 (2.6)	11.0	154.0	23.6	-88.5	3.8	16.6	3.4	2.8	1.5	7.5	-2.9	-7.6
	GMD	GEMADEPT CORP	33,100	9,976 (434)	118,466 (5.1)	10.8	25.0	18.2	-57.0	8.6	11.5	1.9	1.8	2.7	2.6	12.8	26.7
	CII	HOCHI MINH CITY	22,600	5,398 (235)	46,954 (2.0)	38.4	14.9	9.0	65.7	6.5	9.9	1.1	1.0	4.4	-4.3	-9.7	-11.2
Industrials (capital goods)	ROS	FLC FAROS CONSTR	3,670	2,083 (091)	163,034 (7.1)	46.4	-	-	-92.4	-	-	-	-	1.4	-4.1	2.0	165.2
	GEX	VIETNAM ELECTRIC	17,224	10,411 (452)	133,158 (5.8)	37.7	10.3	15.5	-12.7	12.6	14.8	-	-	3.2	-4.6	8.9	26.5
	CTD	COTECCONS CONSTR	73,200	5,438 (236)	29,728 (1.3)	3.6	14.2	12.6	-52.4	4.0	4.4	0.5	0.5	1.6	1.1	6.1	-19.2
	REE	REE	59,600	18,419 (800)	39,715 (1.7)	0.0	9.2	7.6	-4.5	14.8	15.2	1.2	1.1	0.7	-4.4	0.0	12.2

Source: Bloomberg, KB Securities Vietnam

Vietnam – Focus stocks

Sector	Code	Company name	Price	Mkt cap (VNDbn, USDmn)	Trading value (VNDmn, USDmn)	For avail (%,-1d)	P/E (X)		EPS CAG R (%)	ROE (%)		P/B (X)		Performance (%)			
							20E	21E		20E	21E	20E	21E	1D	1W	1M	YTD
Utilities	GAS	PETROVIETNAM GAS	90,100	172,447 (7,494)	76,998 (3.3)	46.1	16.6	15.4	-17.5	20.2	20.3	3.2	3.0	1.0	-4.8	2.0	0.5
	NT2	PETROVIETNAM NHO	22,850	6,578 (286)	6,965 (0.3)	31.4	12.9	8.3	-10.5	10.5	16.3	-	-	1.6	-0.8	-3.9	-20.3
	PPC	PHA LAI THERMAL	26,200	8,400 (365)	7,018 (0.3)	34.1	9.5	9.6	-5.1	12.2	13.4	1.2	1.2	-0.2	-1.7	-14.3	-3.1
Materials	HPG	HOA PHAT GRP JSC	32,481	145,287 (6,314)	1,822,598 (79.1)	18.0	8.8	8.3	21.9	40.7	29.0	2.6	2.0	2.9	-2.6	15.6	72.9
	DPM	PETROVIETNAM FER	17,400	6,809 (296)	31,599 (1.4)	36.5	11.8	13.3	-0.5	9.3	7.8	1.0	1.0	-1.4	6.5	15.2	12.8
	DCM	PETROCA MAU FER	13,650	7,226 (314)	69,829 (3.0)	46.5	18.5	18.0	-4.5	9.3	9.0	1.6	-	-0.5	7.0	18.7	36.1
	HSG	HOA SEN GROUP	24,900	11,063 (481)	525,994 (22.8)	38.9	6.7	8.0	67.9	38.0	24.1	2.2	1.8	1.3	-4.4	16.7	98.9
	AAA	ANPHAT BIOPLAST	14,150	3,138 (136)	63,962 (2.8)	97.2	9.4	8.5	17.2	10.5	11.0	0.9	-	2.5	-1.2	2.5	11.8
Energy	PLX	VIETNAM NATIONAL	56,100	68,375 (2,972)	201,319 (8.7)	4.6	19.9	16.5	-51.0	15.7	16.7	2.8	2.7	2.9	-5.6	1.9	-1.1
	PVD	PETROVIETNAM DRI	23,400	9,854 (428)	213,814 (9.3)	39.9	47.0	22.3	-11.9	1.3	3.3	0.6	0.6	1.4	-7.2	9.5	38.9
	PVT	PETROVIET TRANSP	17,900	5,793 (252)	93,998 (4.1)	35.9	9.4	8.9	1.2	13.6	13.4	1.3	1.2	4.4	1.0	22.0	44.6
Consumer discretionary	MWG	MOBILEWORLD INV	139,500	65,024 (2,826)	111,435 (4.8)	0.0	12.6	10.0	13.7	28.1	28.3	3.2	2.6	1.3	-0.4	-0.4	15.2
	PNJ	PHU NHUAN JEWELR	87,500	19,895 (865)	43,044 (1.9)	0.0	16.6	13.1	2.4	24.3	23.8	3.5	2.9	1.1	-3.7	3.1	19.6
	YEG	YEAH1 GROUP CORP	40,300	1,261 (055)	2,609 (0.1)	70.6	-	-	-	-	-	-	-	1.9	5.1	-2.9	-52.7
	FRT	FPT DIGITAL RETA	28,200	2,227 (097)	25,887 (1.1)	30.3	19.6	13.7	-75.2	8.5	11.8	1.6	1.5	1.6	0.8	-3.0	-18.1
	PHR	PHUOC HOA RUBBER	61,900	8,387 (365)	45,295 (2.0)	34.6	7.9	11.7	41.2	27.6	19.9	2.0	-	0.6	-2.2	3.8	-14.0
Healthcare	DHG	DHG PHARMACEUTIC	100,300	13,114 (570)	2,458 (0.1)	45.4	16.7	15.3	10.7	20.5	20.7	3.2	2.9	-0.4	-0.2	-4.2	-9.5
	PME	PYMEPHARCO JSC	80,200	6,016 (261)	215 (0.0)	11.7	-	-	1.6	-	-	-	-	0.0	-0.2	3.5	6.9
IT	FPT	FPT CORP	68,000	61,301 (2,664)	237,545 (10.3)	0.0	19.4	15.9	15.6	25.6	26.4	4.2	3.7	2.0	-1.4	12.7	62.5

Source: Bloomberg, KB Securities Vietnam

KB SECURITIES VIETNAM RESEARCH

Head of Research – Nguyen Xuan Binh

binhnx@kbsec.com.vn

Macro/Strategy

Head of Macro & Strategy – Tran Duc Anh

anhtd@kbsec.com.vn

Macro Analyst – Thai Thi Viet Trinh

trinhhtt@kbsec.com.vn

Market Strategist – Le Anh Tung

tungla@kbsec.com.vn

Equity analyst – Tran Thi Phuong Anh

anhttp@kbsec.com.vn

Equity (Hanoi)

Head of Equity Research (Hanoi) – Duong Duc Hieu

hieudd@kbsec.com.vn

Information Technology & Logistics Analyst – Nguyen Anh Tung

tungna@kbsec.com.vn

Property Analyst – Pham Hoang Bao Nga

ngaphb@kbsec.com.vn

Power & Construction Material Analyst – Nguyen Ngoc Hieu

hieunn@kbsec.com.vn

KB SECURITIES VIETNAM (KBSV)

Head Office:

Levels G, M, 2 & 7, Sky City Tower, 88 Lang Ha Street, Dong Da District, Hanoi, Vietnam
Tel: (+84) 24 7303 5333 – Fax: (+84) 24 3776 5928

Hanoi Branch:

Level 1, VP Building, 5 Dien Bien Phu, Ba Dinh District, Hanoi, Vietnam
Tel: (+84) 24 7305 3335 – Fax: (+84) 24 3822 3131

Ho Chi Minh Branch:

Level 2, TNR Tower Nguyen Cong Tru, 180-192 Nguyen Cong Tru Street, District 1, HCMC, Vietnam
Tel: (+84) 28 7303 5333 – Fax: (+84) 28 3914 1969

Saigon Branch:

Level 1, Saigon Trade Center, 37 Ton Duc Thang, Ben Nghe Ward, District 1, HCMC, Vietnam
Tel: (+84) 28 7306 3338 – Fax: (+84) 28 3910 1611

CONTACT INFORMATION

Institutional Client Center: (+84) 28 7303 5333 – Ext: 2656
Private Customer Care Center: (+84) 24 7303 5333 – Ext: 2276
Email: ccc@kbsec.com.vn
Website: www.kbsec.com.vn

Investment ratings & definitions

Investment Ratings for Stocks

(based on expectations for absolute price gains over the next 6 months)

Buy:	Hold:	Sell:
+15% or more	+15% to -15%	-15% or more

Investment Ratings for Sectors

(based on expectations for absolute price gains over the next 6 months)

Positive:	Neutral:	Negative:
Outperform the market	Perform in line with the market	Underperform the market

Opinions in this report reflect the professional judgment of the research analyst(s) as of the date hereof and are based on information and data obtained from sources that KBSV considers reliable. KBSV makes no representation that the information and data are accurate or complete and the views presented in this report are subject to change without prior notification. Clients should independently consider their own particular circumstances and objectives and are solely responsible for their investment decisions and we shall not have liability for investments or results thereof. These materials are the copyright of KBSV and may not be reproduced, redistributed or modified without the prior written consent of KBSV. Comments and views in this report are of a general nature and intended for reference only and not authorized for use for any other purpose.