

# VIETNAM DAILY

## [Market Commentary]

Local stock market collapsed with falling liquidity, and securities firms, real estate developers and banks were at the center of the turmoil

## [Futures/ETFs]

Futures contracts dropped sharply, similar to the movement of the VN30-Index

## [Market Movers]

DBC, STK

October 24, 2022

	Index	Chg (%, bp)
Ho Chi Minh	986.15	-3.30
VN30	973.88	-3.63
VN30 futures	942.00	-4.37
Hanoi	209.50	-3.64
HNX30	342.21	-5.18
UPCoM	76.45	-2.70
USD/VND	24,842	+0.70
10-yr govt bond (%)	4.84	+1
Overnight rate (%)	4.95	+121
Oil (WTI, \$)	83.18	-2.20
Gold (LME, \$)	1,648.16	-0.57



# Market Commentary

**VNIndex** 986.15P (-3.30%)  
**Volume (mn shrs)** 654.9 (+11.5%)  
**Value (U\$mn)** 486.0 (-18.0%)

**HNXIndex** 209.50P (-3.64%)  
**Volume (mn shrs)** 77.4 (-13.5%)  
**Value (U\$mn)** 37.9 (-30.5%)

**UPCoM** 76.45P (-2.70%)  
**Volume (mn shrs)** 41.4 (-29.2%)  
**Value (U\$mn)** 17.9 (-24.2%)

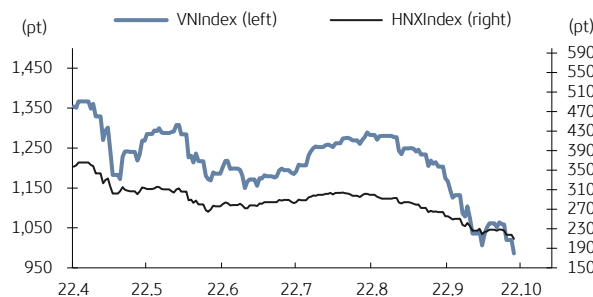
**Net foreign buy (U\$mn)** +4.3

Local stock market collapsed with falling liquidity, and securities firms, real estate developers and banks were at the center of the turmoil. Foreign investors were net buyers, focusing on FPT Digital Retail (FRT, +1.6%), Masan Group (MSN, -2.7%), and PV Ca Mau Fertilizer (DCM, +0.2%).

The Department of Agricultural Products Processing and Market Development said the total area of sugarcane cultivation in the 2021/22 crop is 146,938 ha, down 3.9% compared to the 2020/21 crop, causing the output to contract by 1.4% YoY to 9,496,358 tons. The news negatively impacted Lam Son Sugar (LSS, -7%) and Thanh Thanh Cong – Bien Hoa (SBT, -3.9%).

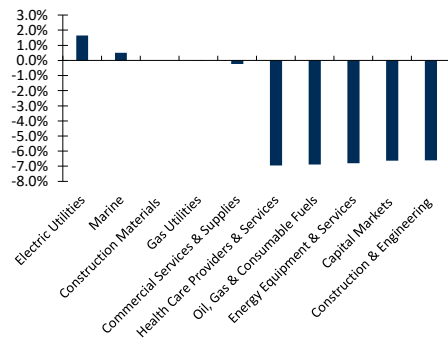
According to the Civil Aviation Authority of Vietnam, airport passenger traffic reached 7.1 million in October, down 11.6% over the previous month, making aviation stocks Vietnam Airlines (HVN, -5.4%) and Vietjet Aviation (VJC, -1.7%) close down.

VN Index & HNX Index



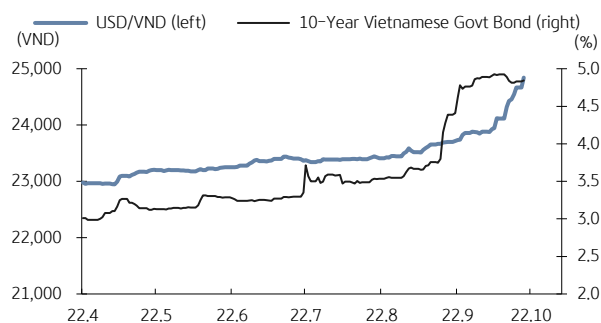
Source: Bloomberg, KB Securities Vietnam

VN Index sector performance



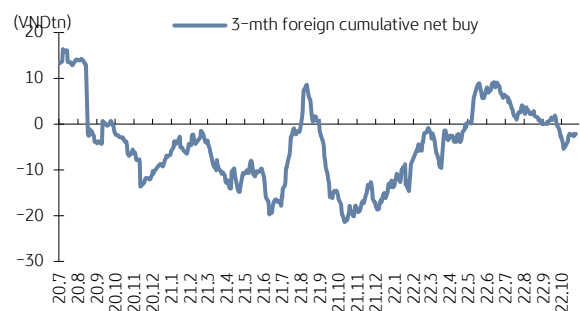
Source: Bloomberg, KB Securities Vietnam

USD/VND & 10-year government bond rates



Source: Bloomberg, KB Securities Vietnam

Vietnam - 3-mth cumulative net foreign buy



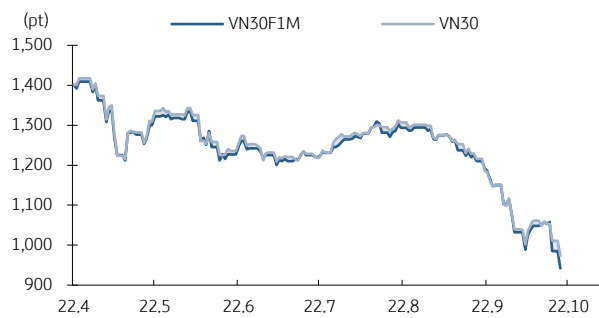
Source: FiinPro, KB Securities Vietnam

# Futures/ETFs

<b>VN30</b>	<b>973.88P (-3.63%)</b>
<b>VN30 futures</b>	<b>942.0P (-4.37%)</b>
<b>Open</b>	<b>995.5P</b>
<b>High</b>	<b>996.0P</b>
<b>Low</b>	<b>930.2P</b>
<b>Contracts</b>	<b>464,683 (+10.4%)</b>

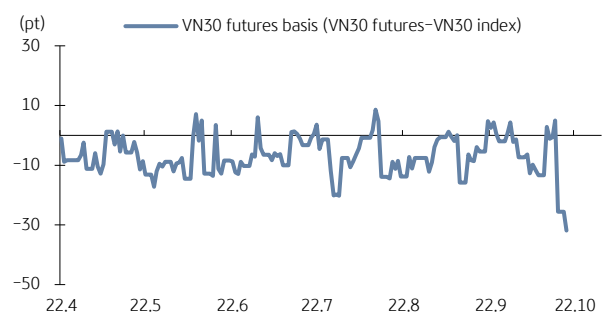
Futures contracts dropped sharply, similar to the movement of the VN30-Index. The basis ranged between -7.91 and -35.99bps as market sentiment soured and closed at -31.88bps. Trading volume increased in today's session.

VN30 futures & VN30 index



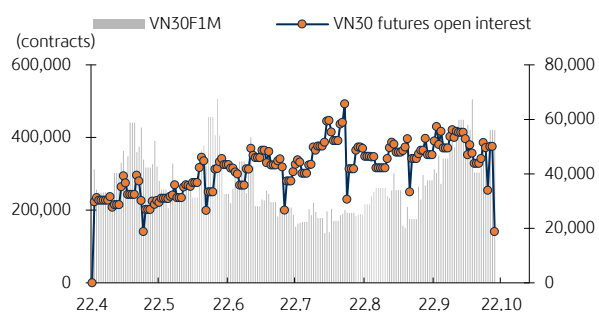
Source: Bloomberg, KB Securities Vietnam

Front month VN30 futures basis



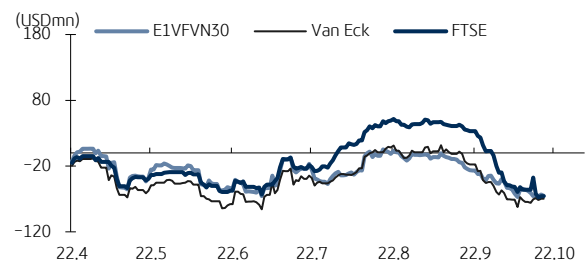
Source: Bloomberg, KB Securities Vietnam

VN30 futures volume & open interest



Source: Bloomberg, KB Securities Vietnam

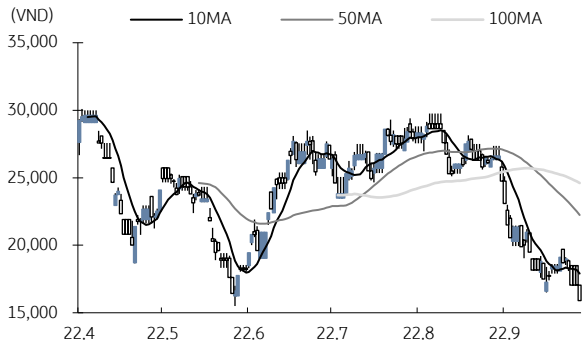
Vietnam ETFs - 3-mth cumulative net buy



Source: FinPro, KB Securities Vietnam

## Market Movers

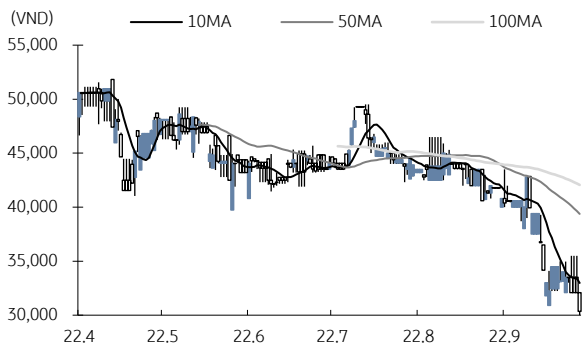
### Dabaco Group (DBC)



Source: Bloomberg, KB Securities Vietnam

- DBC closed down 6.74% to VND15,900.
- DBC announced its consolidated financial statements for the third quarter of 2022, with NPAT surpassing VND206 billion (+49% YoY, +15x QoQ) and revenue of VND3,665 billion (+31% YoY). In particular, real estate contributed VND700 billion to earnings, primarily thanks to the handover of the Parkview project. However, Livestock and poultry raising continued to face numerous challenges despite improvements over the first half of the year.

### Century Synthetic Fiber Corporation (STK)



Source: Bloomberg, KB Securities Vietnam

- STK closed down 5.45% to VND30,350.
- In 3Q22, STK posted profit after tax down almost 20% YoY to VND50 billion and revenue up 10% YoY to VND515 billion. During the period, STK suffered a foreign exchange loss of USD400,000 due to purchasing input materials and repaying short-term debts in US dollars. Besides, STK discloses the foundation of the Unitex project has been completed and is applying for the construction permit.

# KBSV Model Portfolio

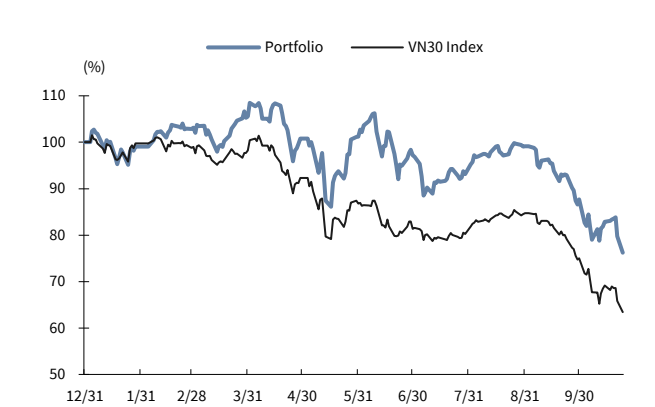
KBSV Research Team

## Investment approach:

- Seeks to outperform the VN30 Index by identifying the most attractive stocks within our coverage universe over the next 3 months
- Employs a risk-managed exit strategy that sets a profit target of +30% and stop loss of -15%
- Uses an equal-active-weight (with monthly rebalancing method) approach that allocates 100% of the portfolio to stocks that, at times, can include a VN30 index ETF

	VN30 Index	Master Portfolio
Daily return	-3.63%	-4.42%
Cum. return	-36.58%	-23.78%

## Performance vs VN30 Index



## KBSV domestic model portfolio

Ticker	Inclusion date	Close 22/10/24	Daily return (%)	Cumulative return (%)	Main investment catalysts
Mobile World (MWG)	19/08/09	50,600	-7.0%	31.0%	- Optimizing revenue from DM G & TGDD chains - BHX expects to reach break-even point soon at stores and distribution centers - In the long term, BHX aims to capture 10-15% of the food retail market
Binh Son Refinery (BSR)	22/06/30	17,100	-10.0%	-40.0%	- High crack spreads would boost BSR's revenue and profit - BSR has been conducting a feasibility report on upgrading & expanding the Dung Quat Ref
Phu Nhuan Jewelry (PNJ)	19/03/22	101,500	-3.1%	32.4%	- Strong topline supported by transaction volumes (2018 +34% & ASPs (2018 +5%) - Strongest customer base to capture lucrative watch segment (5% of sales by 2022E) - Core business activities growing again after the "ERP" incident
Nam Tan Uyen (NTC)	21/11/11	151,200	-4.6%	-21.3%	- NTC-3 is expected to be the main growth force in 2022 - Positive long-term outlook for industrial park industry - Healthy financial structure
Refrig Elec Eng (REE)	18/10/11	76,800	-2.8%	159.8%	- Office lease management & E-town Central occupancy generates stable cash flow - Strategic investments in utility industry provides stable/long-term dividend stream
FPT Corp (FPT)	18/09/06	71,100	-3.8%	193.1%	- Software outsourcing foothold in Japan/US/Asia-Pacific/EU drives 25% overseas CAGR - Telecoms stable 15% growth/solid subscriber growth & profitable Pay-TV from 2020E - 20%+ earnings momentum by 2020E
Vietin Bank (CTG)	20/01/31	21,000	-3.0%	11.1%	- Building on strong earnings recovery in 2019 & optimistic outlook for 2020 - Growing expectations for capital increase in 2020 to offset loan-growth concerns - Already improved asset quality and benign credit risks for 2020
PV Gas (GAS)	20/12/11	107,200	0.0%	46.0%	- Gain benefit from growing LNG demand - Expectation on global oil price recovery - Attractive valuation
Hoa Pha Group (HPG)	19/12/04	16,400	-3.0%	47.3%	- Steel consumption starts to rebound - Construction steel prices show signs of rising again - Increased capacity from Dung Quat project helps HPG expand market share
Kinhbac City Development (KBC)	20/03/09	19,950	-7.0%	94.2%	- Strong pricing for upcoming land sales after Trang Due urban land sales in 4Q19 - Beneficiary of more production facilities from EU companies after EU-Vietnam FTA - Re-location of supply chains from China after COVID-19 scare

Source: Bloomberg, KB Securities Vietnam

# Market Monitors

## Ho Chi Minh – Net foreign buys/sells

Ticker	Chg (%)	For. own (%,-1d)	Net buy (VND bn)
FRT	1.6%	20.4%	38.5
MSN	-2.7%	29.2%	31.4
DCM	0.2%	9.5%	27.5
VNM	-3.9%	55.3%	23.6
HAG	3.9%	1.5%	19.9
Ticker	Chg (%)	For. own (%,-1d)	Net sell (VND bn)
STB	-6.9%	20.9%	-55.6
SAB	-6.2%	62.8%	-31.0
VND	-6.8%	16.6%	-5.5
HPG	-3.0%	20.5%	-56.4
NVL	-0.8%	5.3%	-29.4

Source: FinPro, KB Securities Vietnam

## Hanoi – Net foreign buys/sells

Ticker	Chg (%)	For. own (%,-1d)	Net buy (VND bn)
IDC	-5.3%	0.4%	-1.3
PVS	-5.9%	11.4%	3.3
PVI	-1.8%	58.7%	1.9
DP3	-0.6%	0.7%	0.5
TIG	-9.3%	9.8%	0.3
Ticker	Chg (%)	For. own (%,-1d)	Net sell (VND bn)
EVS	-1.5%	0.2%	-0.8
TNG	-2.6%	4.5%	-0.4
HUT	-10.0%	0.8%	-0.1
TV4	-5.7%	0.0%	-0.0
BCC	-9.1%	1.0%	-0.0

Source: FinPro, KB Securities Vietnam

## Sectors – Top 5 best/worst weekly performance

Top 5 best performers	Chg (%)	Key stocks
Pharmaceuticals	3.0%	DHG, IMP, TRA, DBD
Construction Materials	0.0%	HT1, PTB, GAB, ACC
Electric Utilities	-1.9%	PGV, NT2, PPC, TTA
Paper & Forest Products	-1.9%	DHC, HAP, HHP, VID
Banks	-2.1%	VCB, BID, VPB, TCB
Top 5 worst performers	Chg (%)	Key stocks
Capital Markets	-15.9%	SSI, VND, HCM, VCI
Metals & Mining	-14.7%	HPG, HSG, NKG, KSB
Building Products	-14.3%	VGC, BMP, SHI, DAG
Energy Equipment & Services	-14.1%	PVD, PVT
Construction & Engineering	-13.8%	DIG, HDG, VCG, PC1

Source: Bloomberg, KB Securities Vietnam

## Sectors – Top 5 best/worst monthly performance

Top 5 best performers	Chg (%)	Key stocks
Construction Materials	0.0%	HT1, PTB, GAB, ACC
Gas Utilities	-1.7%	GAS, PGD, PMG
Air Freight & Logistics	-2.9%	TMS, SCS, STG, ASG
Pharmaceuticals	-3.1%	DHG, IMP, TRA, DBD
Beverages	-3.9%	SAB, BHN, SMB, SCD
Top 5 worst performers	Chg (%)	Key stocks
Construction & Engineering	-33.7%	DIG, HDG, VCG, PC1
Health Care Providers & Services	-29.4%	TNH, JVC, VMD
Capital Markets	-28.6%	SSI, VND, HCM, VCI
Metals & Mining	-28.3%	HPG, HSG, NKG, KSB
Unclassified	-25.7%	CKG, PSH, NHH, ABS

Source: Bloomberg, KB Securities Vietnam

## Vietnam – Focus stocks

Sector	Code	Company name	Price	Mkt cap (VNDbn, USDmn)	Trading value (VNDmn, USDmn)	For avail (%-1d)	P/E(X)		EPS CAGR (%)	ROE(%)		P/B(X)		Performance(%)			
							20E	21E		20E	21E	20E	21E	1D	1W	1M	YTD
Real estate	VIC	VINGROUP JSC	97,778	372,067 (16,170)	77,237 (3.2)	22.5	23.0	21.5	14.7	8.8	9.2	2.1	1.9	-0.5	0.9	-9.7	-40.6
	VHM	VINHOMES JSC	79,385	339,478 (14,753)	144,782 (6.0)	26.6	6.3	5.2	35.9	22.2	22.0	1.3	1.1	-7.0	-9.9	-22.0	-45.6
	VRE	VINCOM RETAIL JS	34,850	79,190 (3,442)	37,389 (1.6)	17.8	20.8	14.4	-7.6	7.7	10.2	1.6	1.5	-6.9	-10.2	-21.6	-25.7
	NVL	NOVA LAND INVES	45,853	86,712 (3,768)	206,511 (8.6)	31.3	26.4	22.1	6.7	14.1	15.2	3.6	3.2	-0.8	-0.8	-12.0	-18.2
	KDH	KHANGDIEN HOUSE	28,347	19,167 (833)	72,239 (3.0)	11.6	11.2	10.7	13.7	13.0	12.4	1.3	1.2	-6.9	-13.3	-29.1	-52.1
	DXG	DATXANH GROUP	21,130	12,594 (547)	178,915 (7.5)	13.9	8.9	7.1	-	10.4	11.5	0.7	0.7	-6.7	-12.0	-44.0	-60.3
Banks	VCB	BANK FOR FOREIGN	79,937	378,305 (16,441)	77,336 (3.2)	6.3	11.9	10.1	11.7	22.1	22.2	2.4	1.9	0.0	2.6	-10.4	-13.7
	BID	BANK FOR INVESTM	34,507	174,556 (7,586)	39,408 (1.6)	12.7	10.9	8.7	-5.3	17.3	18.9	1.6	1.3	-6.9	-7.2	-12.7	-18.2
	TCB	VIETNAM TECHNOLO	38,900	136,341 (5,925)	204,954 (8.5)	0.0	3.5	3.0	14.3	20.9	19.6	0.7	0.5	-7.0	-15.1	-37.7	-57.4
	CTG	VIETNAM JS COMM	28,512	137,021 (5,955)	108,748 (4.5)	1.4	5.4	4.3	50.3	19.1	20.7	0.9	0.8	-3.0	-6.9	-16.0	-38.1
	VPB	VIETNAM PROSPERI	15,296	101,381 (4,406)	229,090 (9.5)	0.0	5.5	5.4	18.8	19.9	17.3	1.0	0.8	-1.0	-3.4	-19.7	-35.5
	MBB	MILITARYCOMMERC	16,173	73,327 (3,187)	189,041 (7.9)	0.0	4.1	3.5	14.6	24.4	22.9	0.9	0.7	-3.1	-10.9	-25.7	-35.2
	HDB	HDBANK	16,320	40,641 (1,766)	34,516 (1.4)	4.2	5.1	4.5	23.3	22.9	21.4	1.1	0.9	-3.3	-3.3	-18.0	-35.4
	STB	SACOMBANK	18,600	33,548 (1,458)	317,205 (13.2)	14.0	6.9	2.3	26.5	12.5	24.8	0.7	0.6	-6.9	-18.2	-30.8	-52.9
	TPB	TIEN PHONG COMME	20,630	28,732 (1,249)	55,322 (2.3)	0.0	5.2	3.9	37.4	21.6	22.0	1.0	0.8	0.2	-2.2	-19.6	-50.9
	EIB	VIETNAM EXPORT-I	18,500	22,745 (988)	57,906 (2.4)	0.2	17.1	14.6	27.3	16.0	16.2	2.2	2.0	-0.8	-1.4	5.2	8.3
Insurance	BVH	BAOVIET HOLDING	61,900	45,950 (1,997)	59,373 (2.5)	21.0	16.7	13.6	15.8	9.9	11.5	1.6	1.5	-0.3	-5.5	-18.0	-14.5
	BMI	BAOMINH INSURANC	22,250	2,439 (106)	11,717 (0.5)	14.2	11.0	9.8	9.1	12.8	13.6	1.2	1.1	-4.3	-4.3	-31.5	-49.5
Securities	SSI	SSI SECURITIES C	20,676	19,947 (867)	302,010 (12.5)	55.4	9.1	8.3	-3.2	15.2	13.1	-	-	-6.8	-16.1	-26.9	-69.0
	VCI	VIETCAPITAL SEC	21,154	9,108 (396)	169,354 (7.0)	71.9	-	-	-4.0	22.7	20.9	-	-	-7.0	-17.8	-28.2	-58.2
	HCM	HOCHI MINH CITY	22,265	8,907 (387)	120,265 (5.0)	52.4	-	-	-19.0	16.9	15.9	-	-	-7.0	-17.2	-34.7	-62.0
	VND	VNDIRECT SECURIT	6,983	5,734 (249)	280,668 (11.7)	27.2	-	-	36.3	27.0	25.6	-	-	-6.8	-15.2	-33.7	-63.0
Consumer staples	VNM	VIETNAM DAIRYP	109,000	227,805 (9,900)	148,970 (6.2)	42.1	17.6	15.8	4.0	27.1	29.2	4.5	4.3	-3.9	-0.1	-3.5	-14.4
	SAB	SAIGON BEER ALCO	192,500	123,447 (5,365)	25,878 (1.1)	36.9	23.3	20.1	7.3	22.3	22.9	4.8	4.2	-6.2	-2.2	-3.2	19.9
	MSN	MASANGROUP CORP	79,250	111,712 (4,855)	98,802 (4.1)	16.5	18.4	13.2	-51.9	15.1	17.9	2.7	2.3	-2.7	-7.8	-33.0	-48.9
	HNG	HOANGANH GIA LA	12,450	13,801 (600)	26,866 (1.1)	48.8	-	-	-	-	-	-	-	-6.8	-12.8	-36.3	-66.7
Industrials (transport)	VJC	VIETJET AVIATION	131,800	69,042 (3,001)	41,363 (1.7)	11.0	45.2	28.7	-88.5	7.5	16.4	-	-	-1.7	-1.8	-5.1	-16.6
	GMD	GEMADEPT CORP	33,100	9,976 (434)	44,496 (1.9)	10.8	14.5	13.1	-57.0	13.7	13.9	1.9	1.7	-7.0	-10.5	-12.1	-9.5
	CII	HOCHI MINH CITY	22,600	5,398 (235)	98,056 (4.1)	38.4	5.3	28.2	65.7	14.3	2.4	0.7	0.7	-6.7	-10.5	-29.5	-67.0
Industrials (capital goods)	ROS	FLC FAROS CONSTR	3,670	2,083 (091)	#N/A (#N/A)	46.4	-	-	-92.4	-	-	-	-	-	-	-	-
	GEX	GELEXGROUP JSC	15,802	10,411 (452)	153,294 (6.4)	37.7	-	-	-14.4	-	-	-	-	-6.8	-18.8	-41.4	-69.7
	CTD	COTECCONS CONSTR	73,200	5,438 (236)	31,314 (1.3)	3.6	36.6	7.3	-52.4	1.0	4.8	-	-	-6.9	-14.6	-41.8	-63.2
	REE	REE	51,826	18,419 (800)	39,594 (1.6)	0.0	10.8	10.6	-4.5	16.4	15.3	1.5	1.4	-2.8	-3.8	-8.1	27.8

Source: Bloomberg, KB Securities Vietnam

## Vietnam – Focus stocks

Sector	Code	Company name	Price	Mkt cap (VNDbn, USDmn)	Trading value (VNDmn, USDmn)	For avail (%, -1d)	P/E (X)		EPS CAG R (%)	ROE (%)		P/B (X)		Performance (%)			
							20E	21E		20E	21E	20E	21E	1D	1W	1M	YTD
Utilities	GAS	PETROVIETNAM GAS	90,100	172,447 (7,494)	45,018 (1.9)	46.1	14.5	15.4	-17.5	24.7	20.8	3.5	3.1	0.0	-3.9	-4.7	11.4
	NT2	PETROVIETNAM NHO	22,850	6,578 (286)	47,991 (2.0)	31.4	10.1	9.8	-10.5	18.2	16.8	1.6	1.5	1.2	-5.1	-17.2	-1.9
	PPC	PHA LAI THERMAL	26,200	8,400 (365)	1,953 (0.1)	34.1	17.4	7.9	-5.1	4.7	9.9	1.0	0.9	-2.0	-2.0	-14.5	-38.5
Materials	HPG	HOA PHAT GRP JSC	24,986	145,287 (6,314)	482,211 (20.0)	18.0	3.9	3.4	21.9	23.6	22.7	0.8	0.7	-3.0	-14.8	-27.8	-54.1
	DPM	PETROVIETNAM FER	17,400	6,809 (296)	144,236 (6.0)	36.5	3.5	5.2	-0.5	40.1	23.5	1.2	1.1	-4.3	-14.3	-15.2	-16.0
	DCM	PETROCA MAU FER	13,650	7,226 (314)	164,954 (6.9)	46.5	4.6	7.0	-4.5	41.5	22.9	1.7	1.5	0.2	-9.8	-17.5	-18.5
	HSG	HOA SEN GROUP	18,864	11,063 (481)	125,315 (5.2)	38.9	6.2	4.9	67.9	10.2	11.8	0.6	0.5	-6.8	-17.1	-28.1	-62.6
	AAA	ANPHAT BIOPLAST	12,864	3,138 (136)	21,736 (0.9)	97.2	-	-	17.2	-	-	-	-	-7.0	-13.6	-34.1	-65.1
Energy	PLX	VIETNAM NATIONAL	56,100	68,375 (2,972)	39,091 (1.6)	4.6	19.5	10.6	-51.0	6.3	11.7	1.2	1.9	-7.0	-10.9	-21.2	-45.6
	PVD	PETROVIETNAM DRI	17,727	9,854 (428)	209,138 (8.7)	39.9	133.7	17.3	-11.9	0.3	4.2	0.7	0.7	-6.8	-13.5	-16.2	-17.2
	PVT	PETROVIET TRANSP	17,900	5,793 (252)	34,436 (1.4)	35.9	6.9	6.9	2.2	13.1	12.2	-	0.7	-6.9	-15.5	-23.5	-32.4
Consumer discretionary	MWG	MOBILEWORLD INV	46,500	65,024 (2,826)	186,756 (7.8)	0.0	13.3	9.7	14.4	24.6	28.5	2.5	2.0	-7.0	-14.1	-27.1	-25.5
	PNJ	PHU NHUAN JEWELR	87,500	19,895 (865)	40,329 (1.7)	0.0	14.1	12.1	2.4	24.2	21.7	2.8	2.4	-3.1	-3.3	-10.9	5.5
	YEG	YEAH1 GROUP CORP	40,300	1,261 (055)	1,002 (0.0)	70.6	-	-	-	-	-	-	-	-6.8	-13.3	-32.8	-46.3
	FRT	FPT DIGITAL RETA	18,800	2,227 (097)	149,248 (6.2)	30.3	16.6	13.3	-75.2	27.8	25.6	3.8	3.0	1.6	-6.6	-12.8	11.5
	PHR	PHUOC HOA RUBBER	61,900	8,387 (365)	28,838 (1.2)	34.6	6.9	6.0	41.2	28.8	23.5	1.6	1.4	-7.0	-16.0	-34.8	-43.1
Healthcare	DHG	DHG PHARMACEUTIC	100,300	13,114 (570)	926 (0.0)	45.4	13.9	12.8	10.7	21.3	20.6	-	-	-2.2	6.2	-1.1	-22.1
	PME	PYMEPHARCO JSC	80,200	6,016 (261)	#N/A (#N/A)	11.7	-	-	1.6	-	-	-	-	-	-	-	-
IT	FPT	FPT CORP	56,667	61,301 (2,664)	107,447 (4.5)	0.0	14.7	11.9	15.5	28.3	28.8	3.7	3.0	-3.8	-3.7	-13.7	-8.3

Source: Bloomberg, KB Securities Vietnam



**Nguyen Xuan Binh – Head of Research**  
binhnx@kbsec.com.vn

**Research Division**  
research@kbsec.com.vn

## **Equity**

**Duong Duc Hieu – Head of Equity Research**  
hieudd@kbsec.com.vn

## **Macro/Strategy**

**Tran Duc Anh – Head of Macro & Strategy**  
anhtd@kbsec.com.vn

## **Banks, Insurance & Securities**

**Nguyen Anh Tung – Senior Analyst**  
tungna@kbsec.com.vn

## **Macroeconomics & Banks**

**Le Hanh Quyen – Analyst**  
quyenlh@kbsec.com.vn

**Nguyen Duc Huy – Analyst**  
huynd1@kbsec.com.vn

## **Strategy, Chemicals**

**Thai Huu Cong – Analyst**  
congth@kbsec.com.vn

## **Real Estate, Construction & Materials**

**Pham Hoang Bao Nga – Senior Analyst**  
ngaphb@kbsec.com.vn

## **Strategy, Fishery & Textiles**

**Tran Thi Phuong Anh – Analyst**  
anhhttp@kbsec.com.vn

**Nguyen Dinh Thuan – Analyst**  
thuannd@kbsec.com.vn

## **Oil & Gas, Utilities**

**Tieu Phan Thanh Quang – Analyst**  
quangtpt@kbsec.com.vn

## **Industrial Real Estate, Logistics**

**Nguyen Thi Ngoc Anh – Analyst**  
anhntn@kbsec.com.vn

## **Support team**

**Nguyen Cam Tho – Assistant**  
thonc@kbsec.com.vn

## **Retails & Consumers**

**Pham Phuong Linh – Analyst**  
linhpp@kbsec.com.vn

**Nguyen Thi Huong – Assistant**  
huongnt3@kbsec.com.vn

## KB SECURITIES VIETNAM (KBSV)

---

### Head Office:

Levels G, M, 2 & 7, Sky City Tower, 88 Lang Ha Street, Dong Da District, Hanoi, Vietnam

Tel: (+84) 24 7303 5333 – Fax: (+84) 24 3776 5928

### Hanoi Branch:

Level 1, VP Building, 5 Dien Bien Phu, Ba Dinh District, Hanoi, Vietnam

Tel: (+84) 24 7305 3335 – Fax: (+84) 24 3822 3131

### Ho Chi Minh Branch:

Level 2, TNR Tower Nguyen Cong Tru, 180–192 Nguyen Cong Tru Street, District 1, HCMC, Vietnam

Tel: (+84) 28 7303 5333 – Fax: (+84) 28 3914 1969

### Saigon Branch:

Level 1, Saigon Trade Center, 37 Ton Duc Thang, Ben Nghe Ward, District 1, HCMC, Vietnam

Tel: (+84) 28 7306 3338 – Fax: (+84) 28 3910 1611

## CONTACT INFORMATION

Institutional Client Center: (+84) 28 7303 5333 – Ext: 2656

Private Customer Care Center: (+84) 24 7303 5333 – Ext: 2276

Email: [ccc@kbsec.com.vn](mailto:ccc@kbsec.com.vn)

Website: [www.kbsec.com.vn](http://www.kbsec.com.vn)

## Investment ratings & definitions

---

### Investment Ratings for Stocks

(based on expectations for absolute price gains over the next 6 months)

Buy:	Hold:	Sell:
+15% or more	+15% to -15%	-15% or more

### Investment Ratings for Sectors

(based on expectations for absolute price gains over the next 6 months)

Positive:	Neutral:	Negative:
Outperform the market	Perform in line with the market	Underperform the market

Opinions in this report reflect the professional judgment of the research analyst(s) as of the date hereof and are based on information and data obtained from sources that KBSV considers reliable. KBSV makes no representation that the information and data are accurate or complete and the views presented in this report are subject to change without prior notification. Clients should independently consider their own particular circumstances and objectives and are solely responsible for their investment decisions and we shall not have liability for investments or results thereof. These materials are the copyright of KBSV and may not be reproduced, redistributed or modified without the prior written consent of KBSV. Comments and views in this report are of a general nature and intended for reference only and not authorized for use for any other purpose.